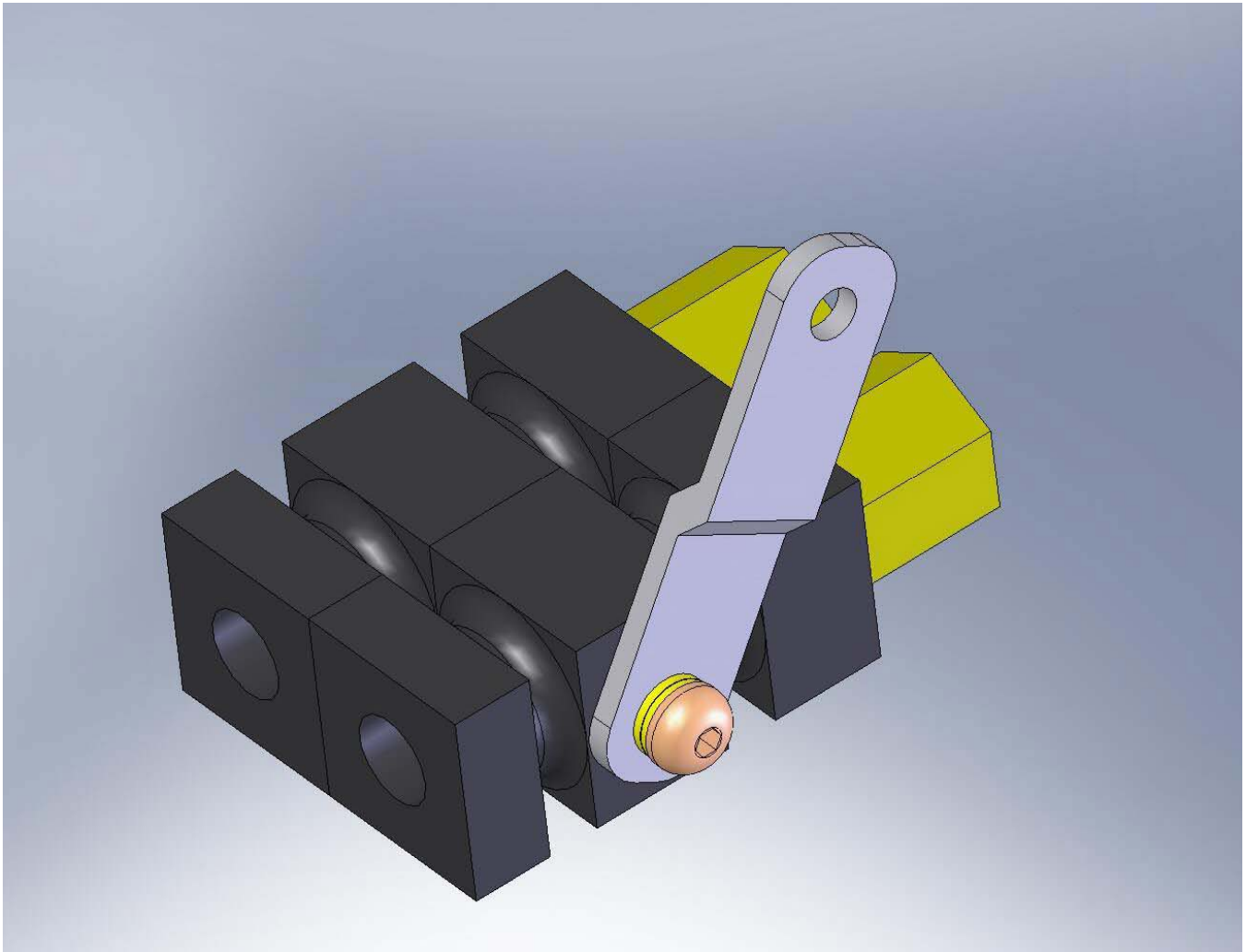




Stopping at Nothing to Get You Stopped

MATCO mfg
2361 S 1560 West
Woods Cross, UT 84087
801-335-0582
801-335-0581 (F)
www.matcomfg.com

MATCO mfg Announces the New PVPV-D Park Brake Valve



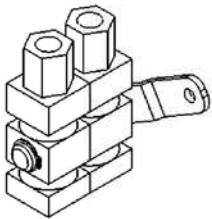
PVPV-D is Loaded with Innovative Features

MATCO mfg is excited to announce the newest model of the Park Brake Valve. As with our earlier model Park Brake Valve, the PVPV-1, our latest model is a resetable check valve. Different from a simple shut off valve, this style valve always ensures pressure can get to the brake. With the valve in the free flow position, unrestricted flow occurs between the pressure source and the brake. With the valve in the closed position, fluid can flow only toward the brake and pressure is trapped beyond the valve allowing the brake to stay locked on the brake disc.

The new PVPV-D unit incorporates many innovative enhancements including:

- Linear flow through body provides compact installation and easier bleeding than valves with a 90 degree flow turn in the valve.
- Innovative body design allows installation of any combination and orientation of straight, 45, or 90 degree fittings. As a result, the hydraulic routing approach to the valve is infinitely flexible.
- Since the body is symmetrical, the lever can be positioned on the left or right side by simply flipping the valve. No need to disassemble the valve to relocate lever.
- Lever handle can be repositioned in 90 degree increments to change valve operating zones.
- New internal design improves robustness and ease of installation.
- The valve is also be available in a single sided configuration under part number PVPV-S
- Lighter weight

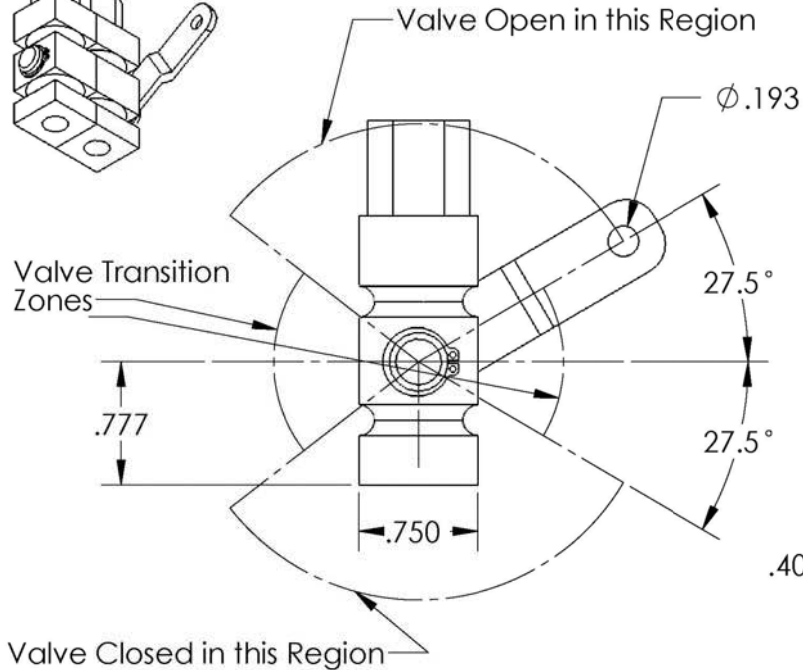
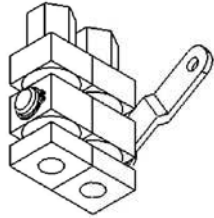
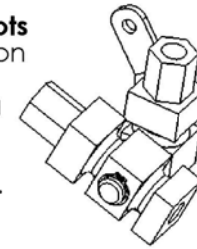
These features are illustrated below



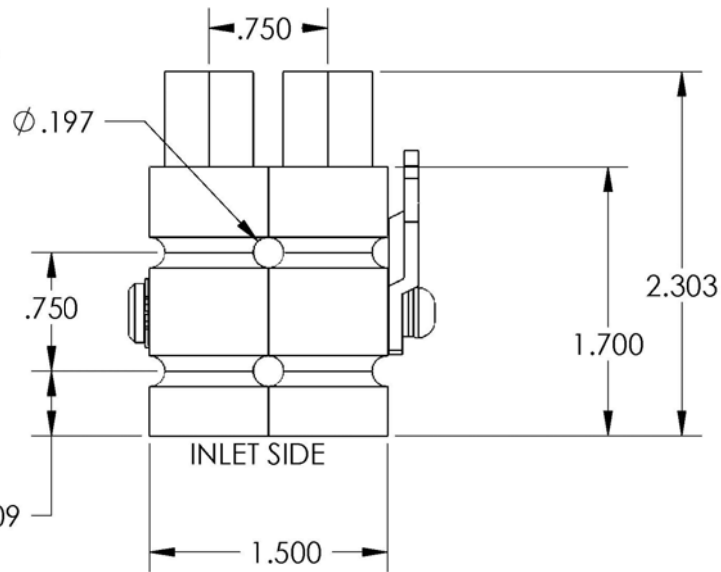
**For Use with Mil-H-5606
or Equivalent Fluid**

**Inlet and Outlet Port
Thread Size 1/8 NPT**

Valve Halves Pivots
to allow installation
of angled fittings
prior to mounting
valve!
Bodies are then
realigned for use.



OUTLET SIDE
To
Brake



NOTE: Lever can be moved to change
Operating Zones in 90 deg increments

NEXT ASSY.	USED ON	QTY

APPLICATION

MATCO mfg

2361 S. 1560 West
Woods Cross, Utah 84087 USA



NOMENCLATURE
VALVE, PARK

MATERIAL
VARIES

PART NUMBER
PVPV-D

DRAWING NO.
PARK/PVPV-D INSTALL

CHECKED BY

SCALE
1:1

REVISION
NC

Est Wt. (lb)
0.283

TOLERANCES
(EXCEPT AS NOTED)

DO NOT SCALE DRAWING
LINEAR .XX = + .03
.XXX = + .01
ANGULAR $\pm 1/2$
CONCENTRIC $\pm .01$

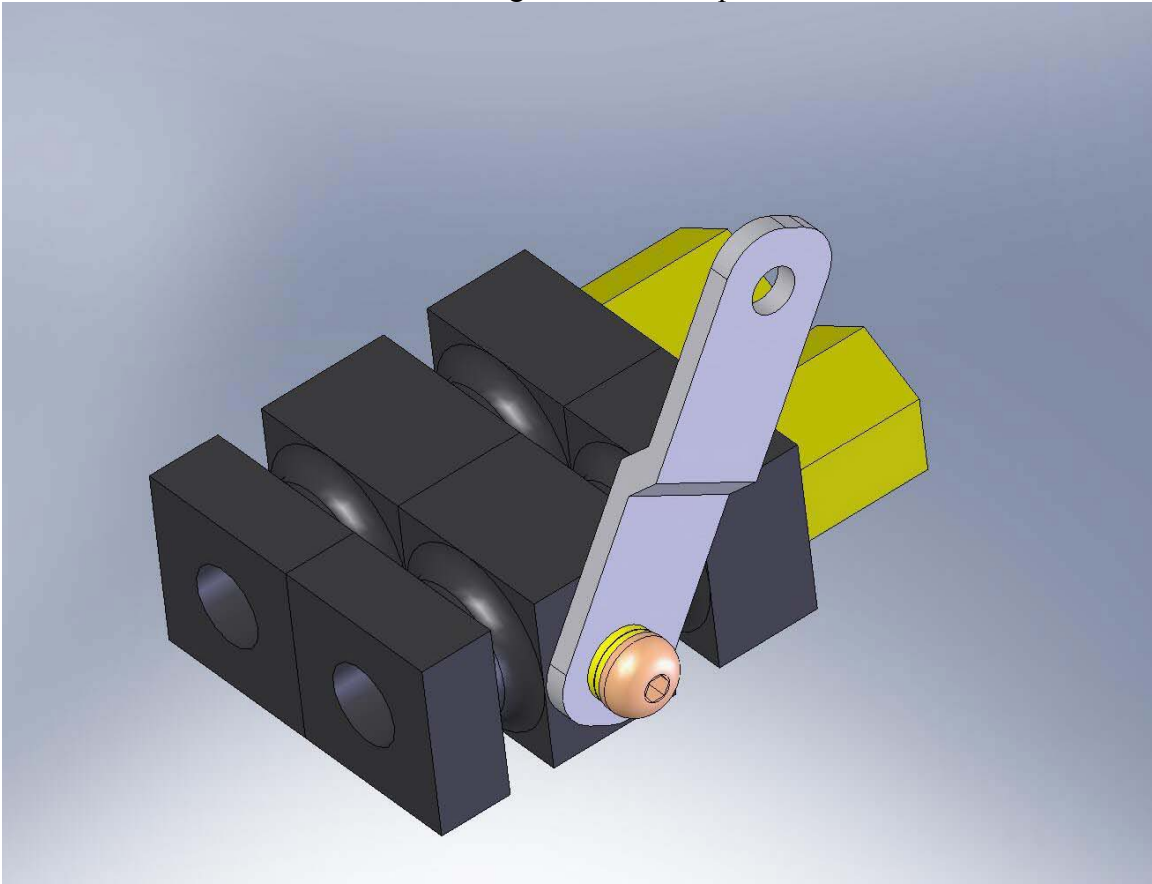
DRAWN BY
George R. Happ

FINISH

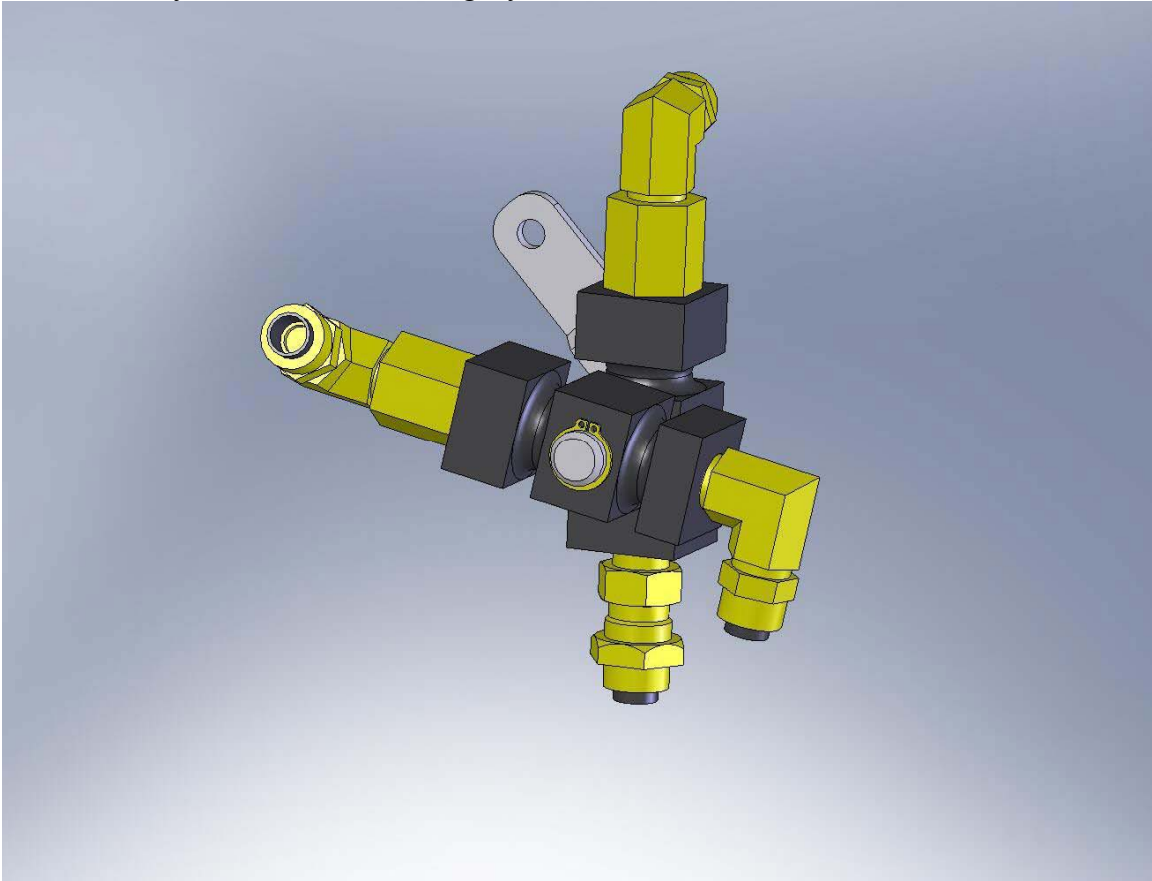
DATE
7/10/2008

SHEET 1 OF 1
SHEET SIZE A

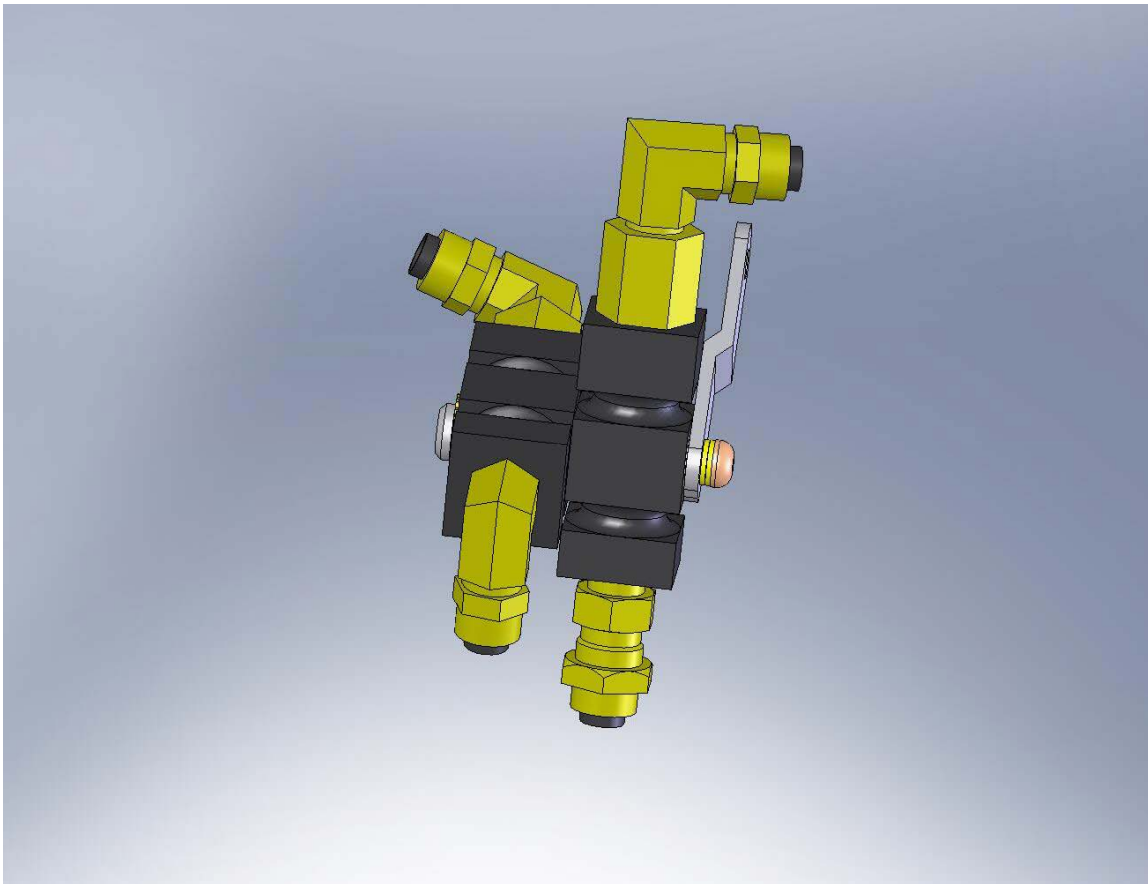
PVPV-D features linear flow with fittings inline for simplified installation.



PVPV-D Pivoting Body allows complete flexibility in fitting selection and hydraulic line approach to the valve. Any combination of fitting styles and orientation can be used.



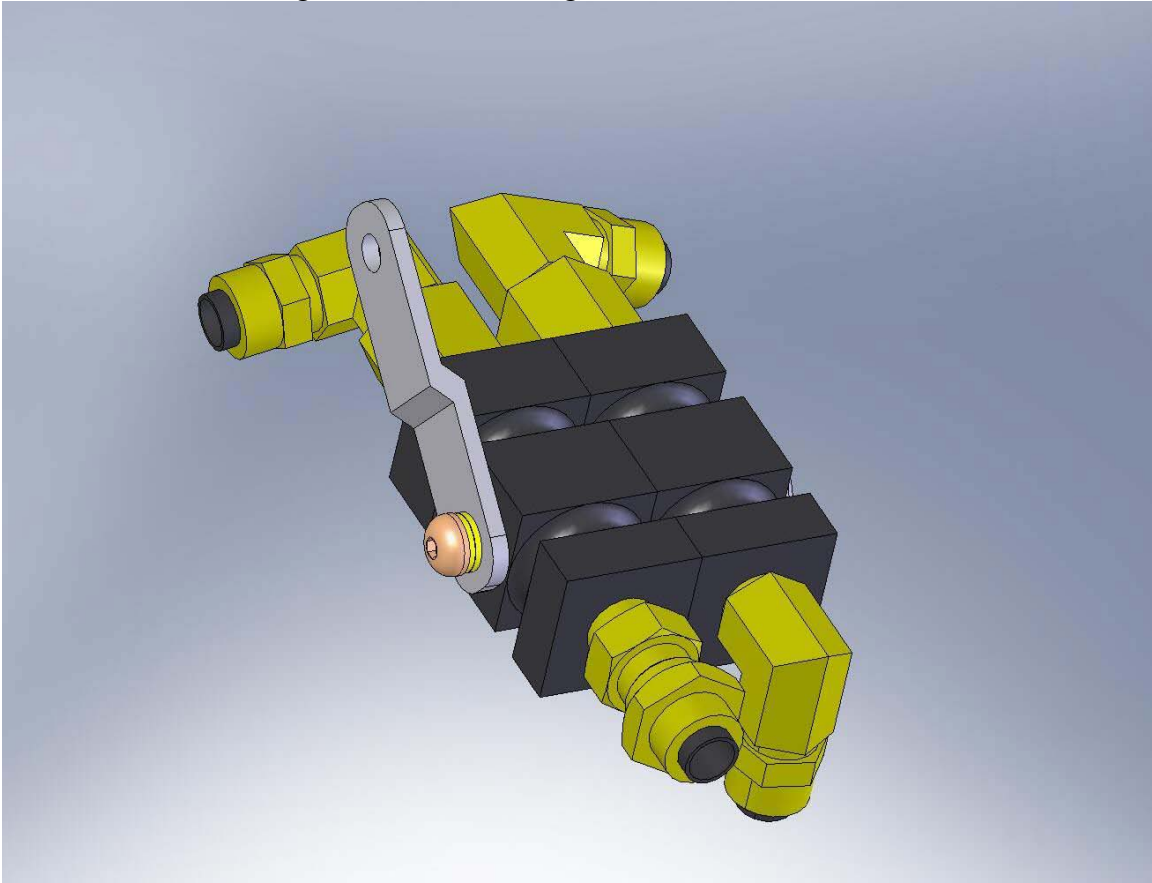
Fittings are installed with body pivoted to allow clearance while rotating until fitting are seated and oriented as desired.



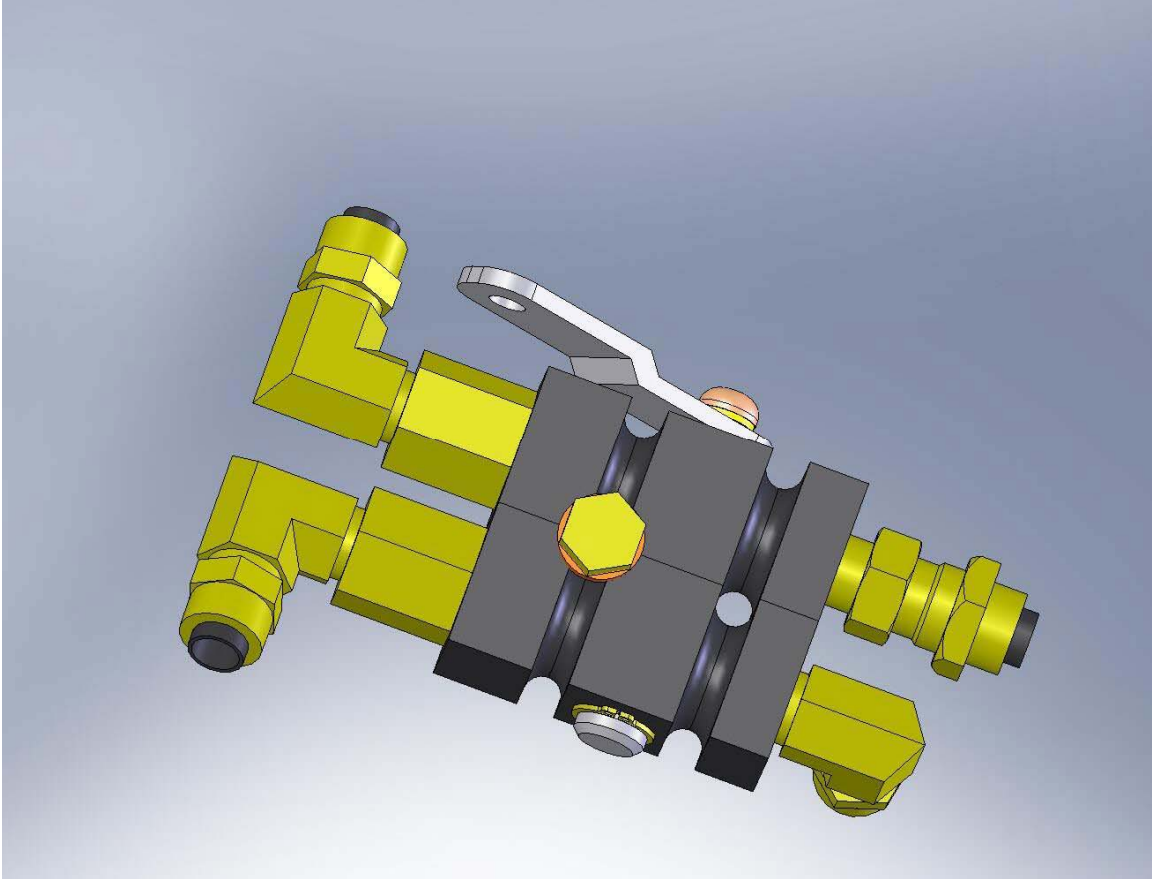
Body is then pivoted back to flat position.



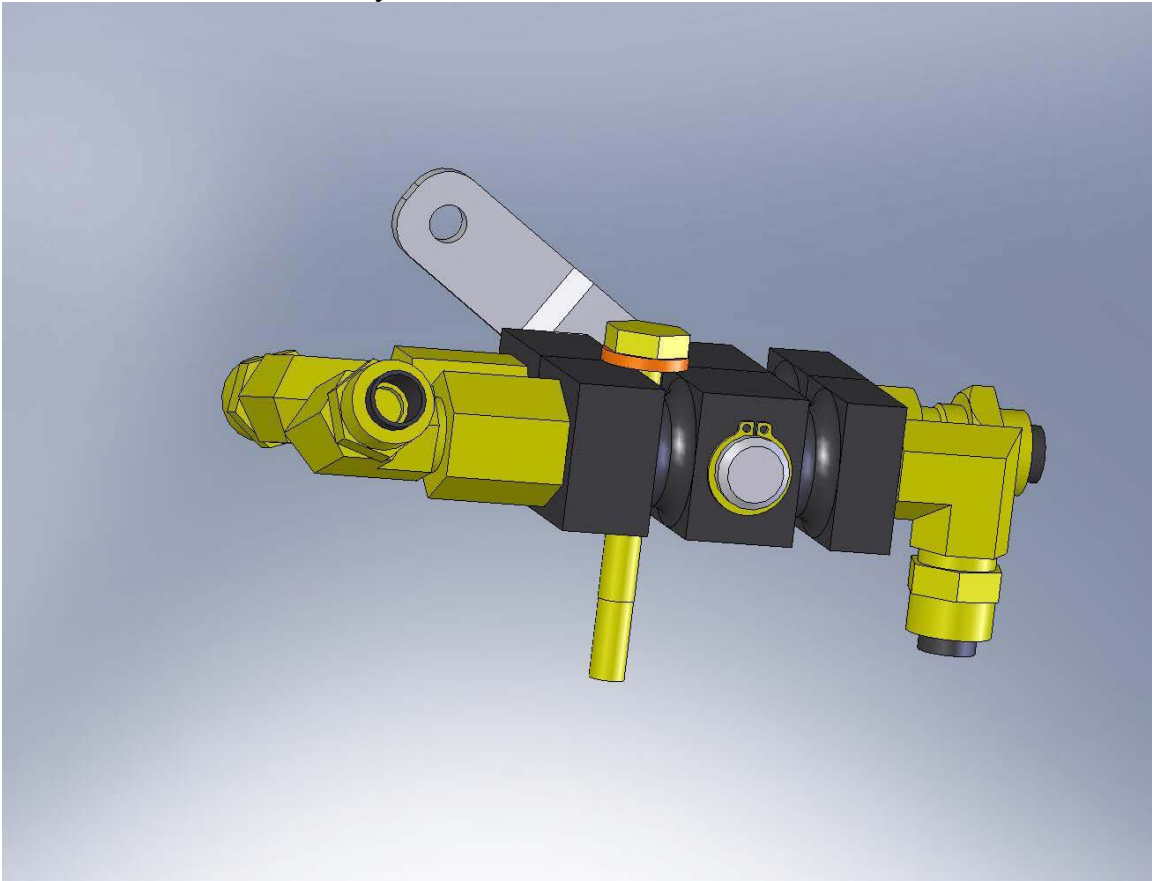
Mounting can be done from either side allowing the lever to be on the right or left side. Simply flip the valve over for mounting with lever on the right side.



Valve is mounted in place using two bolts through body. Bolts hold valve flat.



AN3 bolts or 5 MM bolts may be used.



Valve is ready for use.

